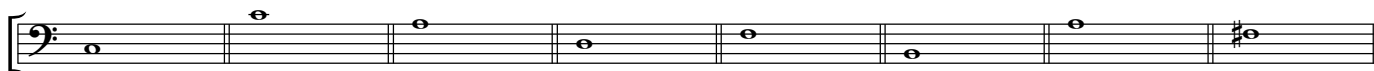


Exercises - Part 1

Name the following notes



Name the following notes



Name the following intervals



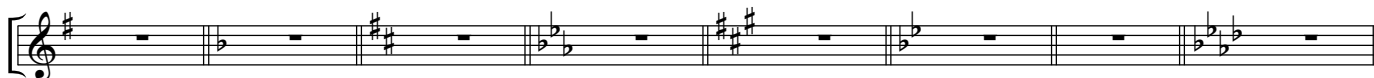
Name the following intervals



Name the following major keys



Name the following minor keys



Name the following modes

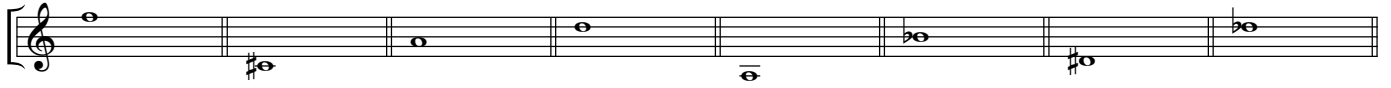


Name the following triads



Exercises - Part 2

Name the following notes



Name the following notes



Name the following intervals



Name the following intervals



Name the following major keys



Name the following minor keys



Name the following modes



Name the following triads



Exercises - Part 3

Name the following notes



Name the following notes



Name the following intervals



Name the following intervals



Name the following major keys



Name the following minor keys



Name the following modes



Name the following chords



Exercises - Part 4

Name the following notes

Two staves of musical notation. The first staff contains four measures: a whole note G2, a whole note F#2, a whole note G2, and a whole note F#2. The second staff contains four measures: a whole note G2, a whole note F#2, a whole note G2, and a whole note F#2.

Name the following intervals

Two staves of musical notation. The first staff contains four measures: a quarter note G2 followed by a quarter note A2, a quarter note G2 followed by a quarter note B2, a quarter note G2 followed by a quarter note A2, and a quarter note G2 followed by a quarter note A2. The second staff contains four measures: a quarter note G2 followed by a quarter note A2, a quarter note G2 followed by a quarter note B2, a quarter note G2 followed by a quarter note A2, and a quarter note G2 followed by a quarter note A2.

Name the following major/minor keys

Three staves of musical notation. The first staff contains four measures: a whole note G2, a whole note F#2, a whole note G2, and a whole note F#2. The second staff contains four measures: a whole note G2, a whole note F#2, a whole note G2, and a whole note F#2. The third staff contains four measures: a whole note G2, a whole note F#2, a whole note G2, and a whole note F#2.

Name the following chords

Two staves of musical notation. The first staff contains four measures: a whole note G2, a whole note F#2, a whole note G2, and a whole note F#2. The second staff contains four measures: a whole note G2, a whole note F#2, a whole note G2, and a whole note F#2.

Write down the sharps or flats to the following key signatures

G minor B major F# minor Eb minor

Four empty musical staves, each corresponding to one of the key signatures listed above.

Write down whether number of notes in the following bars is right/too short/too long

Two staves of musical notation. The first staff contains four measures: a quarter note G2, a quarter note A2, a quarter note B2, and a quarter note C3. The second staff contains four measures: a quarter note G2, a quarter note A2, a quarter note B2, and a quarter note C3.

Exercises - Part 5

What triads are these?

Two staves of musical notation in 4/4 time. The first staff contains eight measures of triads: G2-A2-B2, C3-D3-E3, F3-G3-A3, B2-C3-D3, E3-F3-G3, A2-B2-C3, D3-E3-F3, and G2-A2-B2. The second staff contains eight measures of triads: G2-A2-B2, C3-D3-E3, F3-G3-A3, B2-C3-D3, E3-F3-G3, A2-B2-C3, D3-E3-F3, and G2-A2-B2.

Welke majeur- en mineurtoonsoorten kunnen dit zijn?

Two staves of musical notation. The first staff shows seven key signatures: two sharps (D major), two flats (Bb major), one sharp (F# major), one flat (Bb major), one sharp and one flat (C major), three sharps (F# major), and two flats (Bb major). The second staff shows seven melodic lines corresponding to these key signatures, each starting with a quarter note and followed by eighth notes.

Welke vierklanken zijn dit?

Two staves of musical notation showing various four-note chords. The first staff shows chords: G2-A2-B2-C3, D3-E3-F3-G3, A2-B2-C3-D3, E3-F3-G3-A3, B2-C3-D3-E3, F3-G3-A3-B3, and G2-A2-B2-C3. The second staff shows chords: G2-A2-B2-C3, D3-E3-F3-G3, A2-B2-C3-D3, E3-F3-G3-A3, B2-C3-D3-E3, F3-G3-A3-B3, and G2-A2-B2-C3.

Noteer de kruisen of mollen die bij de toonsoort horen

D-majeur E-mineur B-mineur Fis-mineur

Four empty musical staves corresponding to the labels above, intended for students to write the key signatures for D major, E minor, B minor, and F# minor.

Staan er genoeg noten in de maat, of te veel of te weinig?

Two staves of musical notation. The first staff shows four measures: 4/4 with a triplet of eighth notes, 3/4 with a triplet of eighth notes, 4/4 with eighth notes, and 6/8 with quarter notes. The second staff shows four measures: 3/4 with a triplet of eighth notes, 4/4 with eighth notes, 6/8 with quarter notes, and 4/4 with eighth notes.

Exercises - Part 6

What triads are these?

Two staves of musical notation. The first staff contains eight triads in various positions and keys: C major (root position), D minor (first inversion), E minor (root position), F major (root position), G major (root position), A minor (first inversion), B minor (root position), and C major (root position). The second staff contains eight triads: C major (root position), D minor (first inversion), E minor (root position), F major (root position), G major (root position), A minor (first inversion), B minor (root position), and C major (root position).

Welke majeur- en mineurtoonsoorten kunnen dit zijn?

Two staves of musical notation. The first staff shows eight triads with their respective key signatures: one sharp (F#), two flats (Bb, Eb), three sharps (F#, C#, G#), one flat (Bb), two sharps (F#, C#), one sharp (F#), two flats (Bb, Eb), and three sharps (F#, C#, G#). The second staff shows eight melodic lines corresponding to the triads above, each starting with a root note and moving up stepwise.

Welke vierklanken zijn dit?

Two staves of musical notation. The first staff contains eight quartets in various positions and keys: C major (root position), D minor (first inversion), E minor (root position), F major (root position), G major (root position), A minor (first inversion), B minor (root position), and C major (root position). The second staff contains eight quartets: C major (root position), D minor (first inversion), E minor (root position), F major (root position), G major (root position), A minor (first inversion), B minor (root position), and C major (root position).

Noteer de kruisen of mollen die bij de toonsoort horen

Four empty musical staves, each with a label above it: "D-mineur", "A-majeur", "Cis-mineur", and "As-majeur".

Staan er genoeg noten in de maat, of te veel of te weinig?

Two staves of musical notation. The first staff shows four measures: 4/4 with 8 eighth notes, 3/4 with 6 eighth notes, 2/4 with 8 eighth notes, and 6/8 with 8 eighth notes. The second staff shows four measures: 3/4 with 3 quarter notes, 4/4 with 4 quarter notes, 2/4 with 4 quarter notes, and 5/4 with 5 quarter notes.

Exercises - Part 7

Name the following triads

Two staves of musical notation. The first staff contains six triads: C major, D minor, E major, F major, G major, and A minor. The second staff contains six triads: B major, C major, D minor, E major, F major, and G major.

Name the following major/minor keys and modes

Two staves of musical notation. The first staff shows key signatures: two sharps (D major), one flat (B minor), three sharps (F# major), one flat (B minor), one sharp (F# major), one flat (B minor), one sharp (F# major), and one flat (B minor). The second staff shows modes: D major, D minor, D major, D minor, D major, D minor, D major, and D minor.

Name the following chords

Two staves of musical notation. The first staff contains six chords: C major, D minor, E major, F major, G major, and A minor. The second staff contains six chords: B major, C major, D minor, E major, F major, and G major.

Write down the sharps or flats of the following key signatures

F# major E minor Eb major E major

Four blank staves of musical notation for writing the sharps or flats of the key signatures: F# major, E minor, Eb major, and E major.

Name the following modes

Two staves of musical notation. The first staff shows modes: D major, D minor, D major, D minor, D major, D minor, D major, and D minor. The second staff shows modes: D major, D minor, D major, D minor, D major, D minor, D major, and D minor.