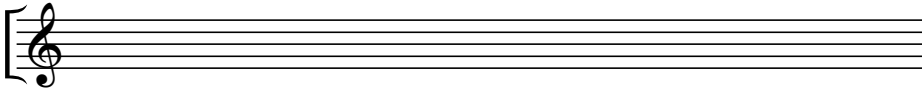


# Trial Exam - Version 1

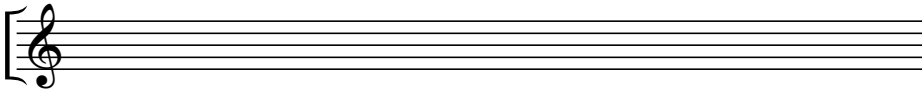
## Key Signatures

1. Add the given key signatures to the clef.

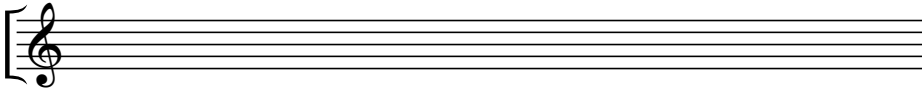
a) D major:



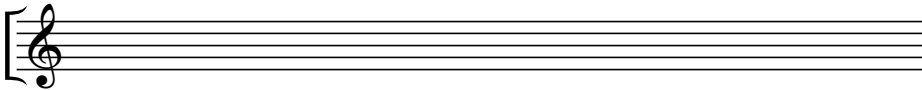
b) A $\flat$  minor:



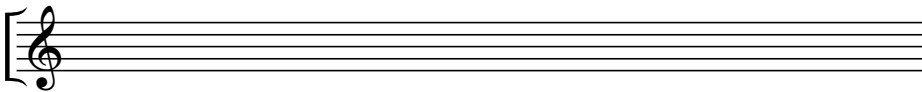
c) B major:



d) F minor:



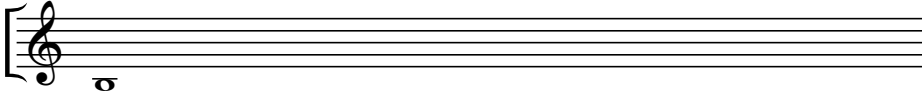
e) G minor:



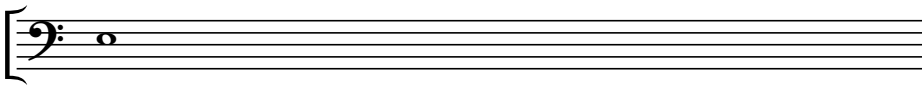
# Intervals

2. Complete the asked interval by adding a note above or below the given one.

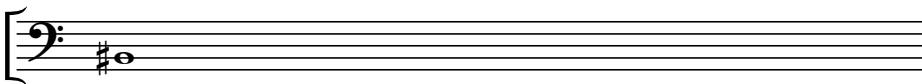
a) *perfect fifth above:*



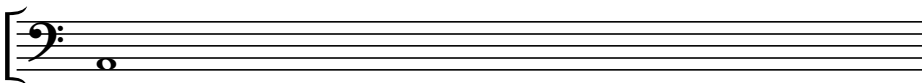
b) *major sixth below:*



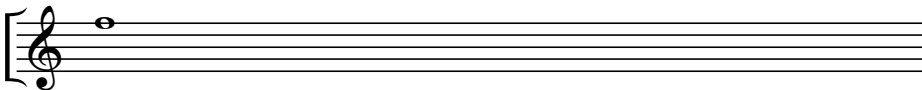
c) *major seventh above:*



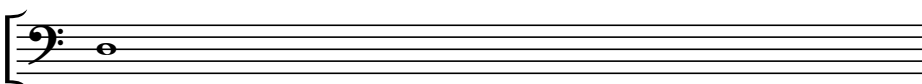
d) *diminished third below:*



e) *diminished fifth below:*



f) *minor sixth above:*



# Chord symbols

3. Circle the correct chord symbol for the given chords.

Musical notation showing a chord in bass clef. The treble staff has notes G<sub>2</sub>, A<sub>2</sub>, B<sub>2</sub>, C<sub>3</sub>. The bass staff has note G<sub>1</sub>.

- Amaj7
- A7
- Am7
- Am7(b5)
- A<sub>0</sub>7

Musical notation showing a chord in treble clef. The treble staff has notes E<sub>4</sub>, G<sub>4</sub>, B<sub>4</sub>. The bass staff has notes B<sub>2</sub>, D<sub>3</sub>, F<sub>3</sub>.

- Ebmaj7
- Eb7
- Ebm7
- Ebm7(b5)
- Eb<sub>0</sub>7

Musical notation showing a chord in treble clef. The treble staff has notes C<sup>#</sup><sub>4</sub>, E<sub>4</sub>, G<sup>#</sup><sub>4</sub>. The bass staff has notes C<sup>#</sup><sub>2</sub>, E<sub>3</sub>, G<sup>#</sup><sub>3</sub>.

- C<sup>#</sup>maj7
- C<sup>#</sup>7
- C<sup>#</sup>m7
- C<sup>#</sup>m7(b5)
- C<sup>#</sup><sub>0</sub>7

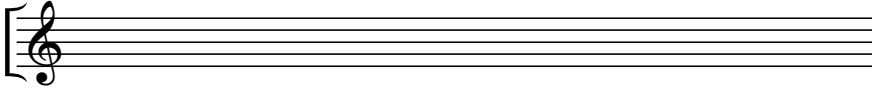
Musical notation showing a chord in treble clef. The treble staff has notes G<sub>4</sub>, B<sup>b</sup><sub>4</sub>, D<sub>5</sub>. The bass staff has note G<sub>2</sub>.

- Gmaj7
- G7
- Gm7
- Gm7(b5)
- G<sub>0</sub>7

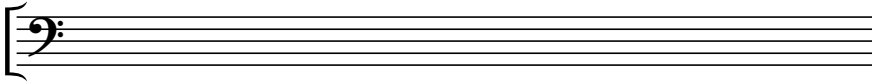
# Scales (major and the three minors)

4. Write down the asked scales.

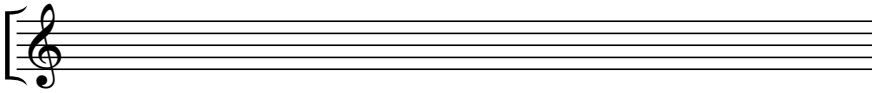
a) G natural minor:



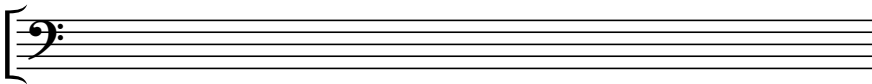
b) D natural minor:



c) F# major:

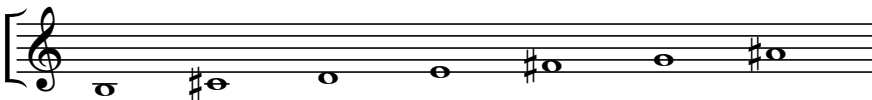


d) Bb melodic minor:

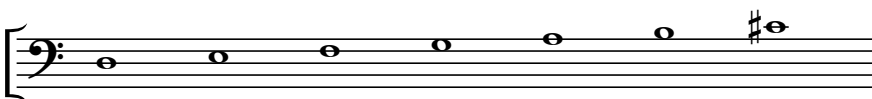


5. What is the name of the given scales?

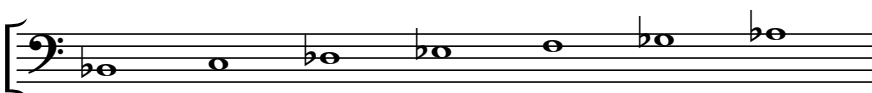
a)



b)



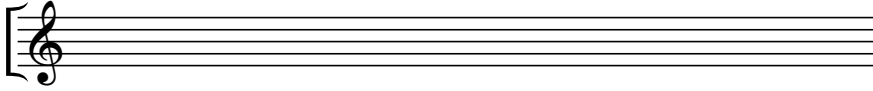
a)



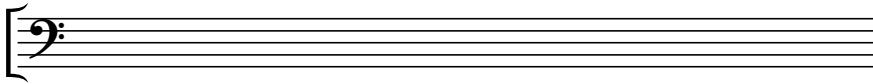
# Triads and inversions

6. Notate the asked triads.

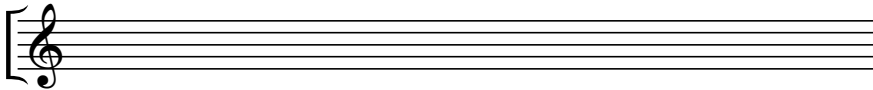
a) *D minor 2nd inversion:*



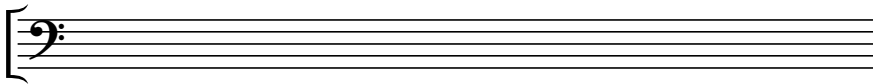
b) *G# major in root position:*



c) *F minor in 1st inversion:*

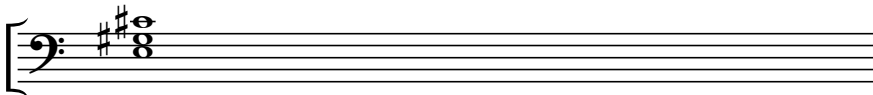


d) *B major in root position:*

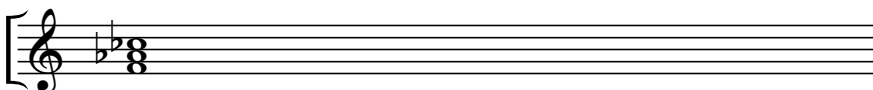


7. Write down the name and inversion of the given triads.

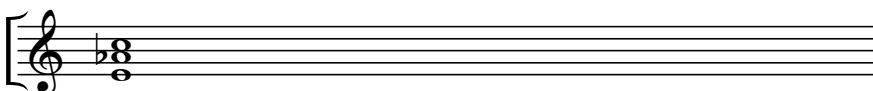
a)



b)



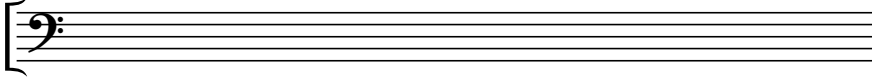
c)



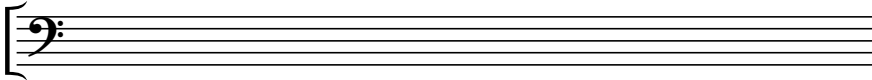
# Modes

8. Write down the asked modes.

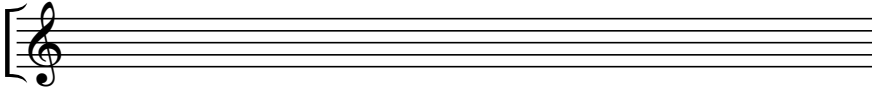
a) B dorian:



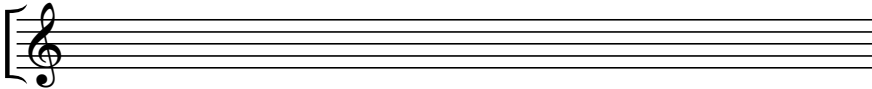
b) Eb lydian:



c) C mixolydian:



d) D phrygian:



9. Name the given modes:

a)



b)



c)

