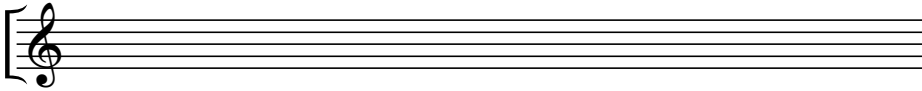


Trial Exam - Version 3

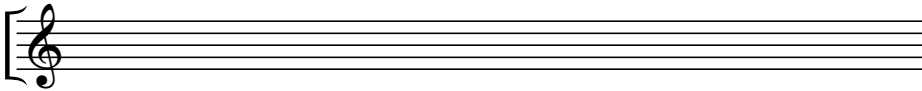
Key Signatures

1. Add the given key signatures to the clef.

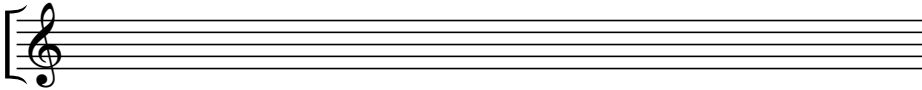
a) G major:



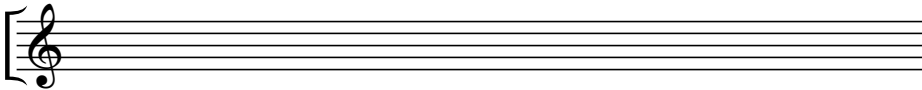
b) D minor:



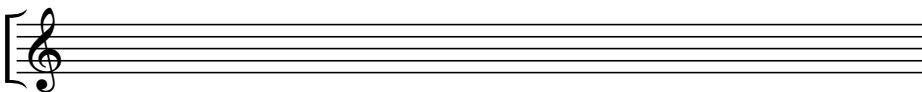
c) Eb major:



d) G# minor:



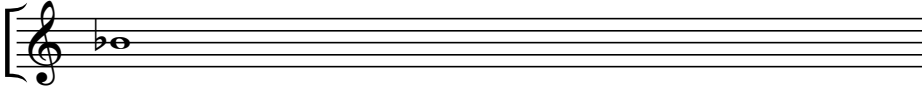
e) Bb minor:



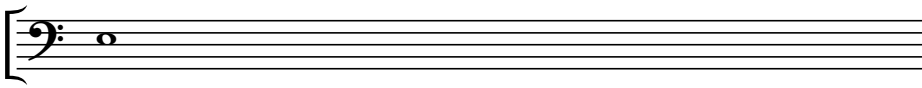
Intervals

2. Complete the asked interval by adding a note above or below the given one.

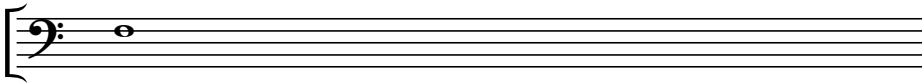
a) *perfect fourth above:*



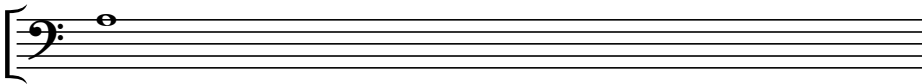
b) *major third below:*



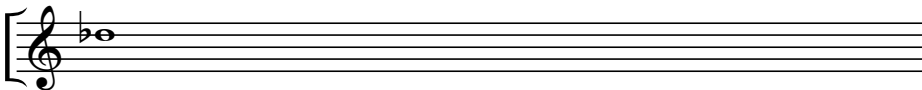
c) *major sixth above:*



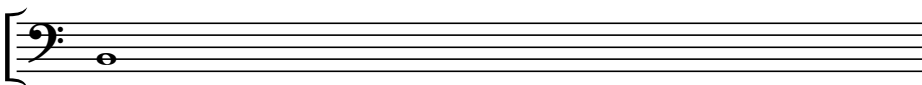
d) *diminished fifth below:*



e) *minor seventh below:*



f) *major second above:*



Chord symbols

3. Circle the correct chord symbol for the given chords.

A musical staff with a treble clef and a key signature of two flats (Bb and Eb). The chord consists of the notes D3, F4, Ab4, and C5. The bass staff shows a single note D2.

- Dmaj7
- D7
- Dm7
- Dm7(b5)
- Dø7

A musical staff with a treble clef and a key signature of one sharp (F#). The chord consists of the notes F#3, A4, C#4, and E5. The bass staff shows a single note F#2.

- F#maj7
- F#7
- F#m7
- F#m7(b5)
- F#ø7

A musical staff with a treble clef and a key signature of two flats (Bb and Eb). The chord consists of the notes D3, Fb4, Ab4, and C5. The bass staff shows a single note D2.

- Dbmaj7
- Db7
- Dbm7
- Dbm7(b5)
- Dbo7

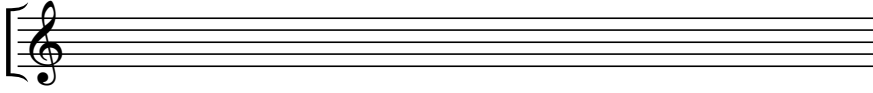
A musical staff with a treble clef and a key signature of two sharps (F# and C#). The chord consists of the notes B3, D#4, F#4, and G#5. The bass staff shows a single note B2.

- Bmaj7
- B7
- Bm7
- Bm7(b5)
- Bø7

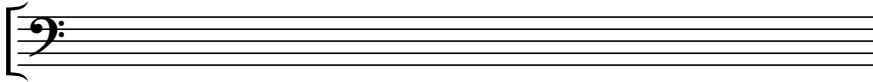
Scales (major and the three minors)

4. Write down the asked scales.

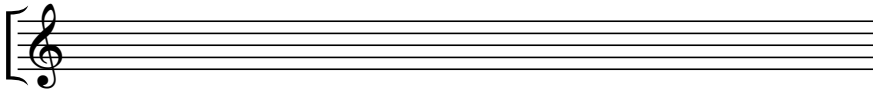
a) *D melodic minor:*



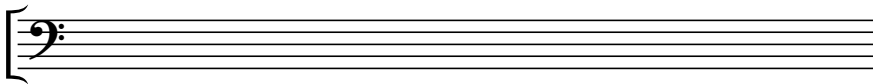
b) *F# major:*



c) *F harmonic minor:*



d) *Bb natural minor:*



5. What is the name of the given scales?

a)



b)



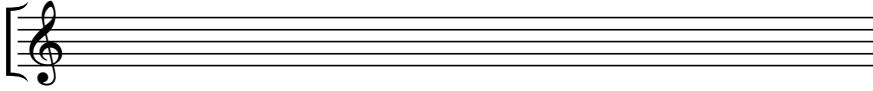
a)



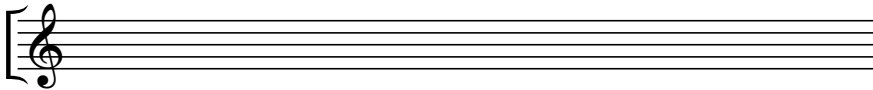
Triads and inversions

6. Notate the asked triads.

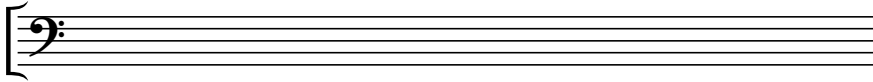
a) Gb major root position:



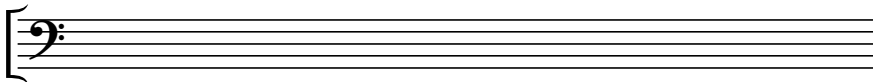
b) B minor in 1st inversion:



c) C major in 2nd inversion:

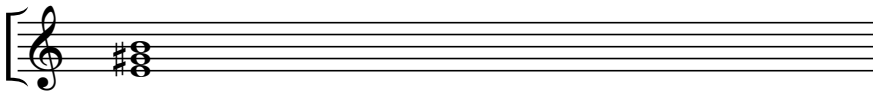


d) G minor in root position:

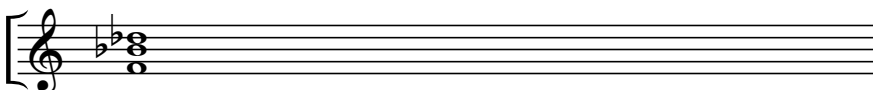


7. Write down the name and inversion of the given triads.

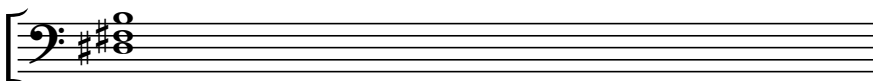
a)



b)



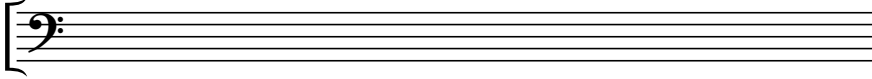
c)



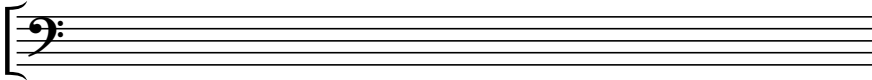
Modes

8. Write down the asked modes.

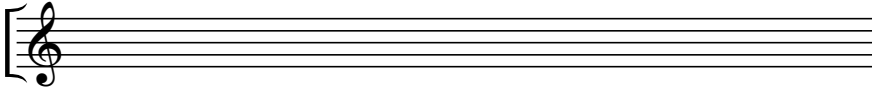
a) F phrygian:



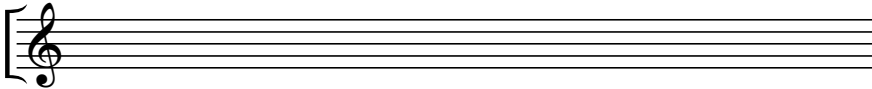
b) C mixolydian:



c) A dorian:



d) B lydian:

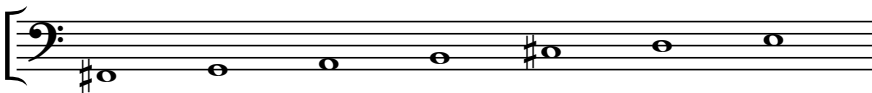


9. Name the given modes:

a)



b)



c)

